

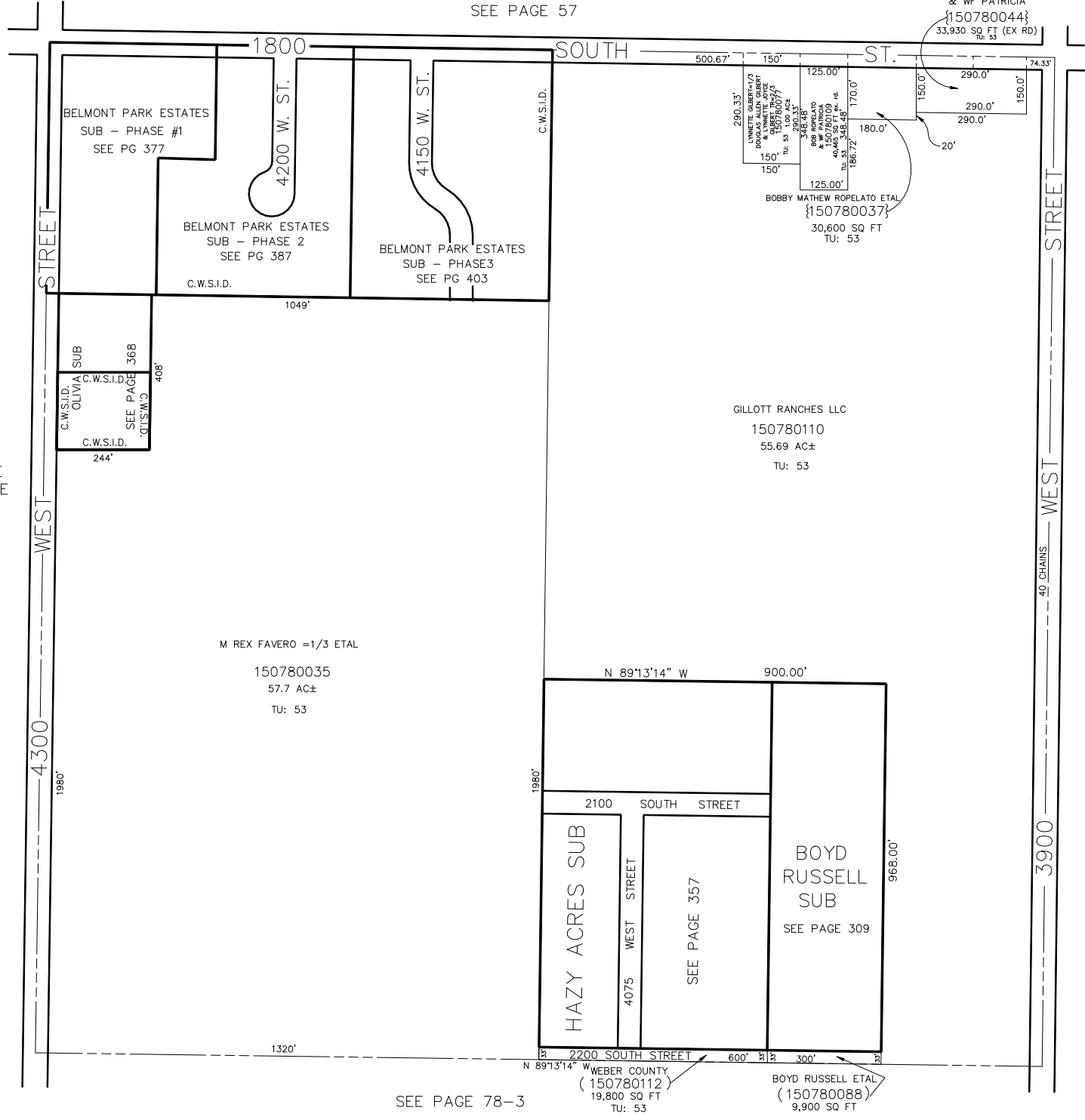
N.W. 1/4
SECTION 28, T.6N., R.2W., S.L.B. & M.

IN WEBER COUNTY
SCALE 1" = 200'

TAXING UNIT: 53,377

SEE PAGE 57

BOB ROPELATO
& WF PATRICIA
{150780044}
33,930 SQ FT (EX RD)
TU: 53



BELMONT PARK ESTATES
SUB - PHASE #1
SEE PG 377

BELMONT PARK ESTATES
SUB - PHASE 2
SEE PG 387

BELMONT PARK ESTATES
SUB - PHASE 3
SEE PG 403

C.W.S.I.D. OLIVIA SUB
C.W.S.I.D. DGE
C.W.S.I.D.
SEE PAGE 368
SEE PAGE 368

LYNNETTE GILBERT-1/3
DOUGLAS ALLEN ROBERT
& WF PATRICIA
{150780042}
3,290.33±
TU: 53 1.00 AC±

BOB ROPELATO
& WF PATRICIA
{150780044}
46,483.52± SQ FT
TU: 53 3,485.45±

BOBBY MATHEW ROPELATO ETAL
{150780037}
30,600 SQ FT
TU: 53

GILLOTT RANCHES LLC
150780110
55.69 AC±
TU: 53

M REX FAVERO =1/3 ETAL
150780035
57.7 AC±
TU: 53

HAZY ACRES SUB
4075 WEST STREET
SEE PAGE 357

BOYD RUSSELL SUB
SEE PAGE 309

SEE PAGE 78-3

WEBER COUNTY
(150780112)
19,800 SQ FT
TU: 53

BOYD RUSSELL ETAL
(150780088)
9,900 SQ FT
TU: 53

SEE PAGE 80

SEE PAGE 78-1